



RIGID OPTICO 2026

LED FLEX

A Global Partner in Light

At LEDFlex Group, we operate beyond the traditional role of a lighting manufacturer. We work in close collaboration with lighting designers, architects, and specifiers to translate ambitious concepts into precisely engineered lighting solutions, delivered across projects worldwide. Bespoke thinking sits at the heart of everything we do. Our portfolio encompasses a diverse range of lighting systems and applications, enabling us to support projects of varying

scales, contexts, and complexities, wherever they are located. Each solution is developed with careful consideration of technical performance, visual intent, and the unique demands of its environment. Through LEDFlex Services, our involvement extends well beyond manufacturing, supporting projects from early design development through to installation, execution, and long-term performance.

Backed by an in-house team of engineers, technical specialists, and project experts, we provide hands-on guidance at every stage, from system design and detailing to rapid prototyping, on-site commissioning, and long-term after-sales support that carries projects from concept sketch to final handover. This depth of involvement is reinforced by a global network, enabling us to deliver consistent expertise and local support across regions and markets.

From architectural and urban environments to hospitality, residential, and commercial spaces, LEDFlex enables lighting that is both technically assured and creatively uncompromising. While we continue to advance performance, precision, and system intelligence, our focus remains clear: to empower designers, give form to ideas, and help elevate projects through lighting solutions that resonate long after the space is illuminated.

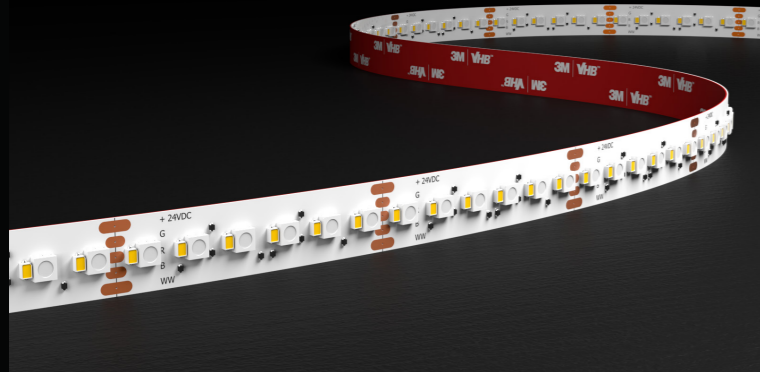


Chedi Hegra
Hegra, Saudi Arabia
Lighting Design: Nulty+, Voltaire

**We manufacture
well-engineered linear
lighting systems that
integrate with the
dynamic demands of
today's market.**

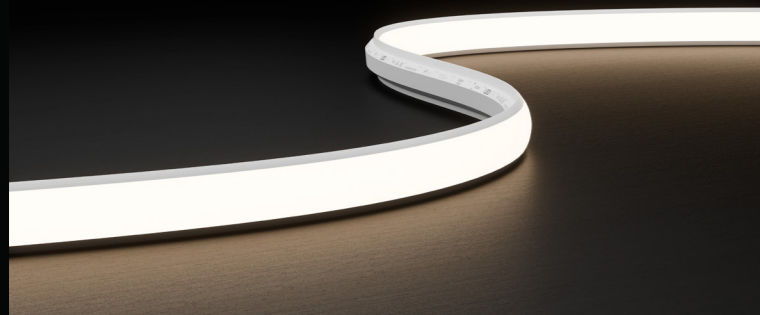
**To be globally recognised
for sustainable premium
linear lighting systems
that inspire creativity while
raising the benchmark
for customer service
excellence.**

Product Portfolio



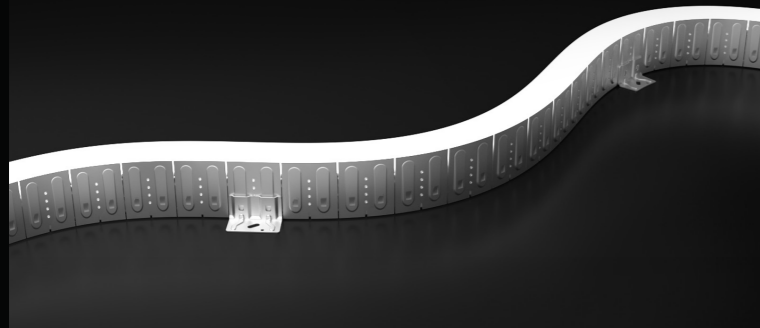
Flexi Range

The Flexi Range is a versatile series of flexible, linear LED light engines designed for diverse interior and exterior applications



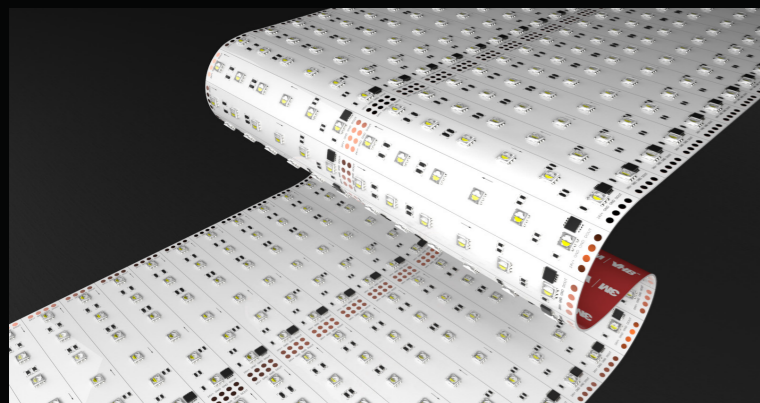
Flexi Neon

Flexi Neon offers highly durable, flexible and diffused linear LEDs built for harsh environments. Streamlined to ease specification



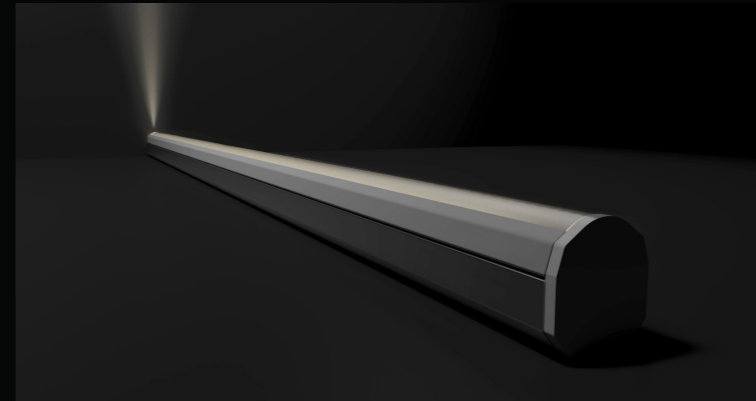
Linear In-Ground

The Linear In-Ground range consists of drive-over flexible linear fixtures specifically designed for outdoor applications



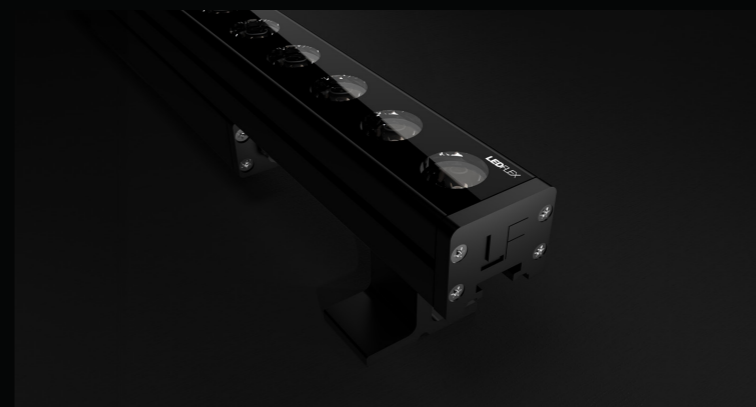
Flexi Panel

The Flexi Panel range consists of ultra-thin, flexible LED light sheets designed for direct adhesion to flat or curved surfaces



Rigid Grazer

The Rigid Grazer range offers tailored solutions for seamless wall grazing applications



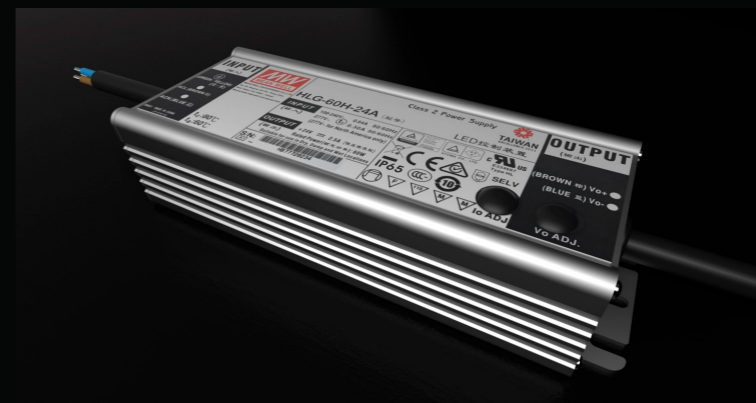
Rigid Optico

The Rigid Optico range consists of high-power LED fixtures designed for dynamic exterior wall washing



Joinery Range

The Joinery Range features linear lighting systems designed for seamless integration into architectural joinery and millwork



Accessories

The LEDFlex control drivers are designed to integrate with the increasing range of available controllers

Product Feature Icons

Colour Temperature

	1500K - 1900K		4500K - 4900K		Blue
	2000K - 2400K		5000K - 5400K		
	2500K - 2900K		5500K - 5900K		
	3000K - 3400K		6000K - 6500K		
	3500K - 3900K		Red		
	4000K - 4400K		Green		

Colour Options

	Single Colour		RGBW
	Single Colour Pixel		RGBW Pixel
	Dynamic White		Dim to Warm
	Dynamic White Pixel		
	RGB		
	RGB Pixel		

Product Features

Technical Data Index

1

2 Rigid Optico Element 40 Single Colour

3 Electrical Output & Data

Power Consumption	10 20 30 40 W	Max Power Length	58.5m 191.9ft
Voltage	100-277V AC	CRI	80 90
Beam Angle	8° 12° 20° 25° 40° 10°x40° 15°x60°		
Ambient Temperature	-20°C to 55°C -4°F to 131°F		

4 Technical Drawing

6 RIGID OPTICO / RIGID OPTICO ELEMENT 40 SINGLE COLOR

Product Code Builder

- Select one option from each category based on your project requirements (family, size, finish, optics, colour temperature, power, length, and control).
- Each selection corresponds to a specific code shown alongside the option.
- Combine the codes in sequence to generate the final product SKU.

7 Product Code Categories:

1 Family	2 Size	3 Finish	4 Beam Angle	5 CRI (Optional)	6 CCT	7 Power & Length	8 Driver
Sample Product Code: RD40B8C2103S							

8

1. Family	Code	2. Size	Code	3. Finish	Code
Rigid Optico Element	RD	40mm 1.57in.	40	Black Grey White	B G W

4. Beam Angle	Code	5. CRI	Code	6. CCT	Code
8°	8	CRI 90+	C	2100K	21
12°	12			2300K	23
20°	20			2700K	27
25°	25			3000K	30
40°	40			3500K	35
10°x40°	1040			4000K	40
15°x60°	1560			5700K	57
				6500K	65

7. Power & Length	Code	8. Driver	Code
10W & 300mm 3.05W & 11.81in.	10 3	Switching	S
20W & 600mm 6.10W & 23.62in.	20 6	0-10V	V
30W & 900mm 9.14W & 35.43in.	30 9	Dali	D
40W & 1200mm 12.19W & 47.24in.	40 12	DMX-RDM	X

Note: Dali & DMX-RDM are not available for 300mm length.

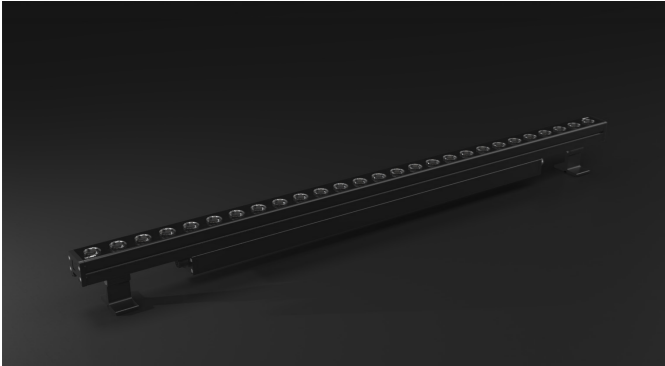
<p>1 Product Render A 3-Dimensional visualisation of our product</p> <p>2 Name of the Product E.g. Rigid Optico Element 40 Single Colour</p> <p>3 Electrical Output & Data 3.1 Power Consumption 3.2 Voltage 3.3 Beam Angle 3.4 Ambient Temperature 3.5 Max Length 3.6 CRI</p> <p>4 Product Features Icons denotes Certifications & Ratings</p>	<p>5 Technical Drawing Drawing of the product with accurate measurements</p> <p>6 Page Navigation Reference guide to locate sections and product details</p> <p>7 Category Guide & Sample Code Quick reference guide to product code categories, with a sample code for clarity.</p> <p>6 Product Code Guide Step-by-step breakdown of the product code structure and how to build the full product code.</p>
---	---



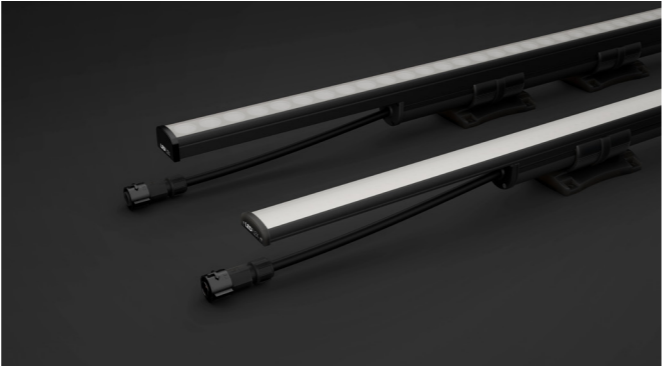
Rigid Optico

The Rigid Optico range consists of high-power LED wall-washing fixtures engineered to deliver uniform vertical illumination across architectural surfaces. Featuring a toughened glass lens and precision optics with multiple beam angle options, the range supports controlled distribution and reduced glare for consistent results across varied wall-washing requirements. Designed for interior and exterior environments, including fully submersible applications, the range is supported by a complete set of accessories for clean integration and seamless system continuity.

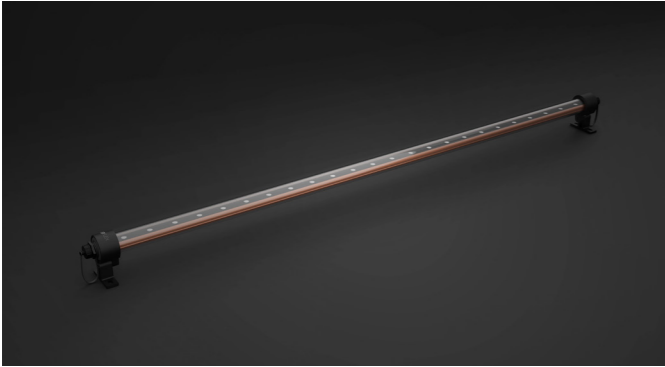
Contents



Rigid Optico Element 16
High-power LED fixtures for exterior wall washing



Rigid Optico Intra 28
High-performance LED fixtures for interior wall washing



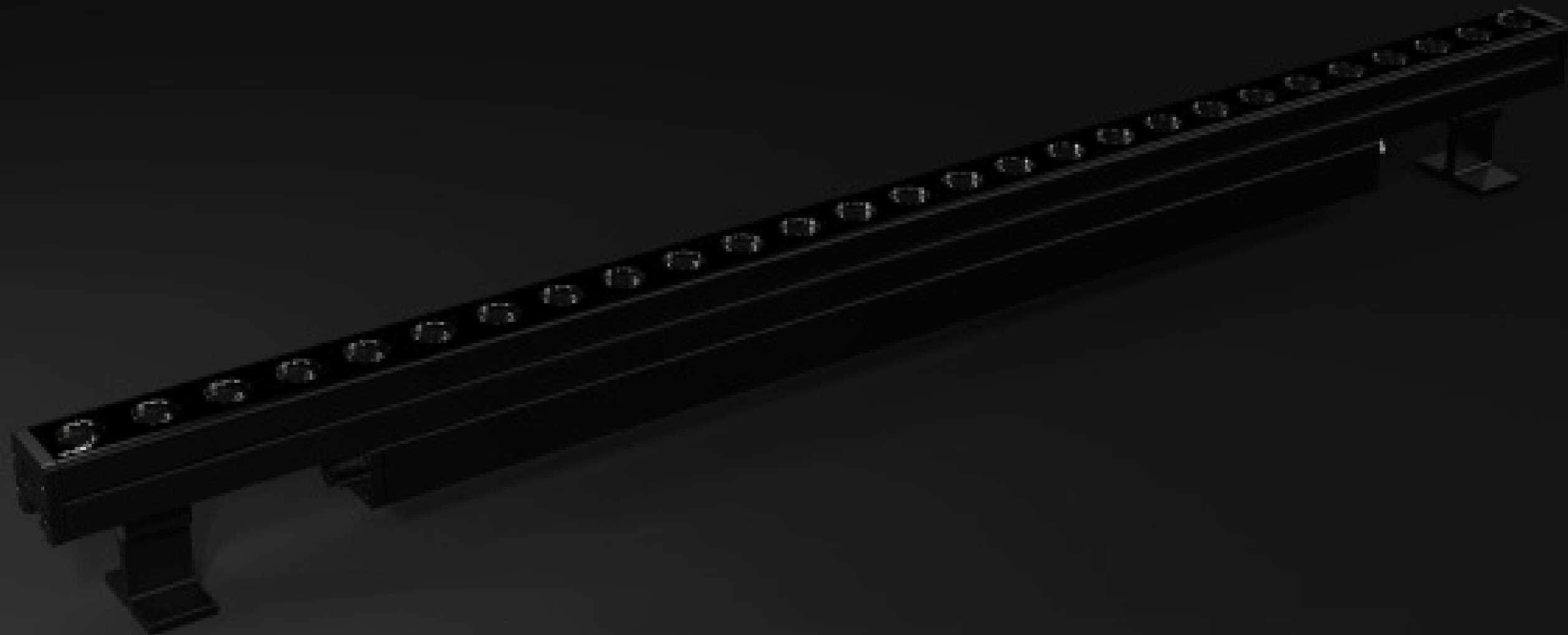
Rigid Optico Aqua 34
Submersible wall-washing LED Fixture for underwater applications



Optico Accessories 42
Complementing accessories for the Rigid Optico range



Chedi Hegra
Hegra, Saudi Arabia
Lighting Design: Nulty+, Voltaire



Rigid Optico Element

The Rigid Optico Element is a high-power LED fixtures designed for dynamic exterior wall washing. With an IP66 rating and toughened glass lens, these high-efficiency fixtures are built to endure harsh weather conditions. The range offers a spectrum of beam angles and colour options including Dynamic White, RGB, RGBW and RGBW Pixel.



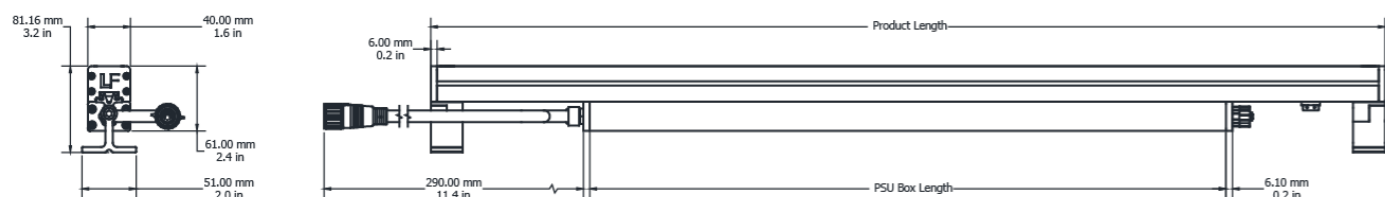
Rigid Optico Element 40 Single Colour

Electrical Output & Data

Power Consumption	10 20 30 40 W	Max Power Length	58.5m 191.91ft
Voltage	100-277V AC	CRI	80 90
Beam Angle	8° 12° 20° 25° 40° 10° X 40° 15° X 60°		
Ambient Temperature	-20°C to 55°C -4°F to 131°F		



Technical Drawing



Product Code Builder

- Select one option from each category based on your project requirements (family, size, finish, optics, colour temperature, power, length, and control).
- Each selection corresponds to a specific code shown alongside the option.
- Combine the codes in sequence to generate the final product SKU.

Product Code Categories:

1 Family	2 Size	3 Finish	4 Beam Angle	5 CRI (Optional)	6 CCT	7 Power & Length	8 Driver
----------	--------	----------	--------------	------------------	-------	------------------	----------

Sample Product Code: R040B8C21103S

1. Family	Code	2. Size	Code	3. Finish	Code
Rigid Optico Element	R0	40mm 1.57in.	40	Black	B
				Grey	G
				White	W

4. Beam Angle	Code	5. CRI	Code	6. CCT	Code
8°	8	CRI 90+	C	2100K	21
12°	12			2300K	23
20°	20			2700K	27
25°	25			3000K	30
40°	40			3500K	35
10°x40°	1040			4000K	40
15°x60°	1560			5700K	57
				6500K	65

7. Power & Length	Code	8. Driver	Code
10W & 300mm 3.05W & 11.81in.	10 3	Switching	S
		0-10V	V
		Dali	D
		DMX-RDM	X
20W & 600mm 6.10W & 23.62in.	20 6	Note : Dali & DMX-RDM are not available for 300mm length.	
30W & 900mm 9.14W & 35.43in.	30 9		
40W & 1200mm 12.19W & 47.24in.	40 12		



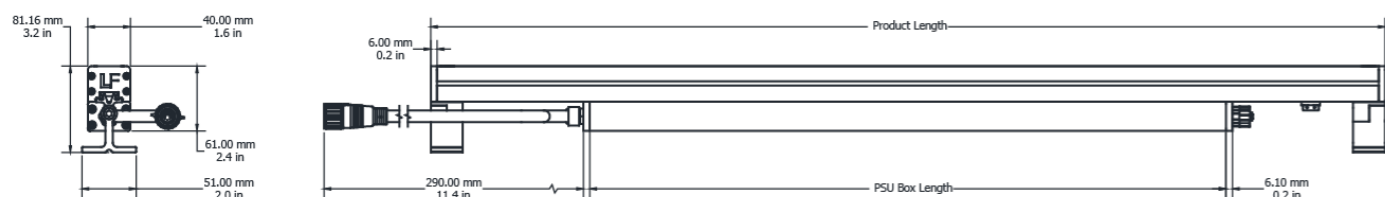
Rigid Optico Element 40 Dynamic White

Electrical Output & Data

Power Consumption	20 30 40 W	Max Power Length	38.4m 95.9ft
Voltage	100-277V AC	CRI	80
Beam Angle	15° 20° X 40° 30° 60°		
Ambient Temperature	-20°C to 55°C -4°F to 131°F		



Technical Drawing



Product Code Builder

- Select one option from each category based on your project requirements (family, size, finish, optics, colour temperature, power, length, and control).
- Each selection corresponds to a specific code shown alongside the option.
- Combine the codes in sequence to generate the final product SKU.

Product Code Categories:

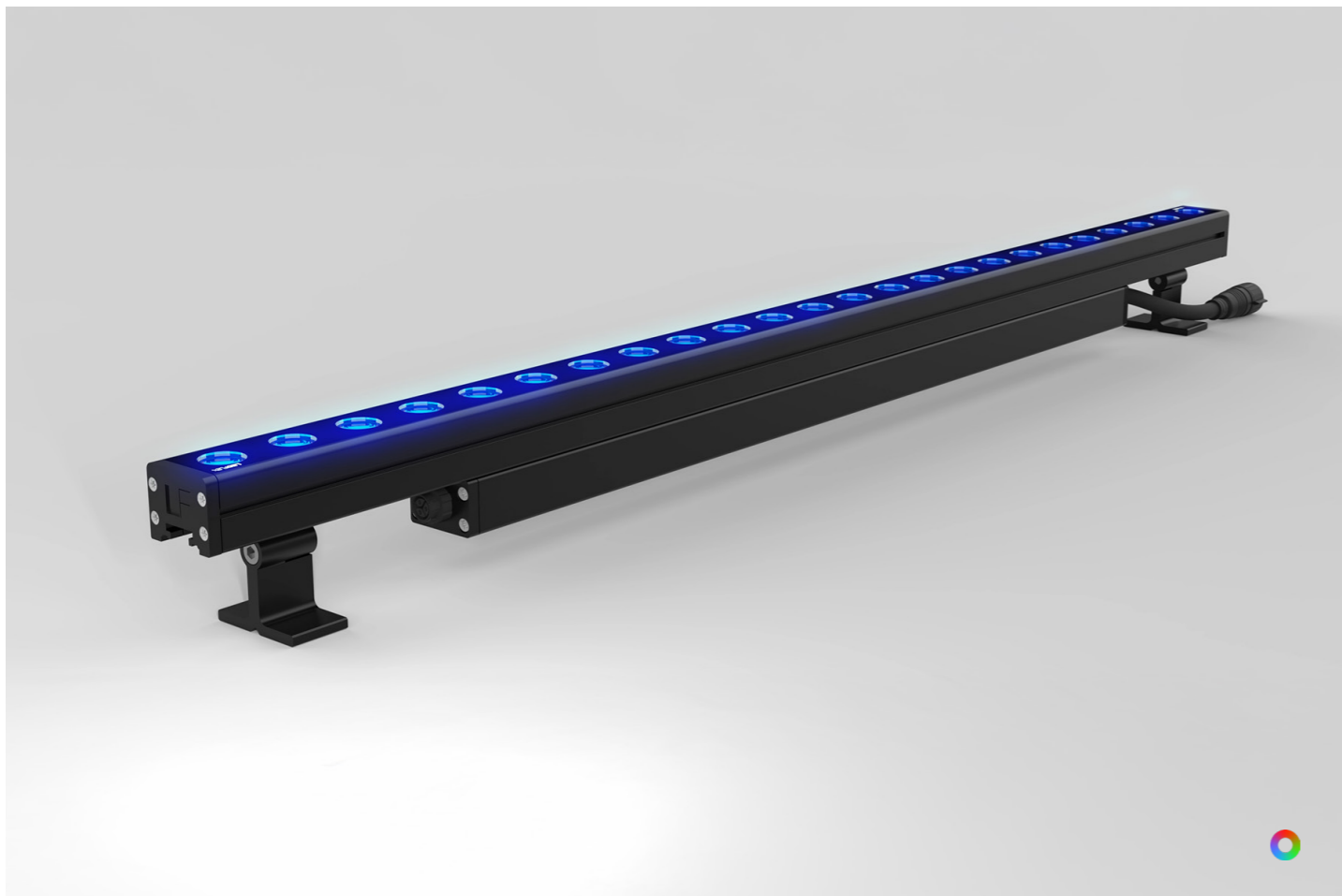
1 Family	2 Size	3 Finish	4 Beam Angle	5 Color Variant	6 CCT	7 Power & Length	8 Driver
----------	--------	----------	--------------	-----------------	-------	------------------	----------

Sample Product Code: R040B15DW1865206X

1. Family	Code	2. Size	Code	3. Finish	Code
Rigid Optico Element	RO	40mm 1.57in.	40	Black Grey White	B G W

4. Beam Angle	Code	5. Colour Variant	Code	6. CCT	Code
15° 30° 60° 20°x40°	15 30 60 2040	Dynamic White	DW	1800K-6500K 2100K-4000K	1865 2140

7. Power & Length	Code	8. Driver	Code
20W & 600mm 6.10W & 23.62in.	20 6	DMX-RDM	X
30W & 900mm 9.14W & 35.43in.	30 9		
40W & 1200mm 12.19W & 47.24in.	40 12		



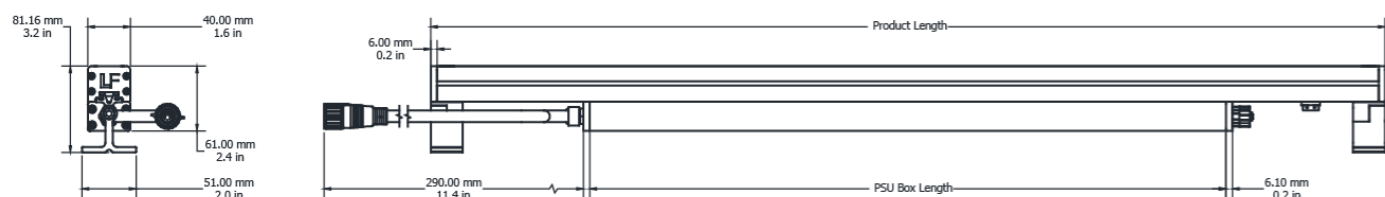
Rigid Optico Element 40 RGB

Electrical Output & Data

Power Consumption	20 30 40 W	Max Power Length	38.4m 95.9ft
Voltage	100-277V AC	CRI	80
Beam Angle	20° X 40° 25° 35° 50°		
Ambient Temperature	-20°C to 55°C -4°F to 131°F		



Technical Drawing



Product Code Builder

- Select one option from each category based on your project requirements (family, size, finish, optics, colour temperature, power, length, and control).
- Each selection corresponds to a specific code shown alongside the option.
- Combine the codes in sequence to generate the final product SKU.

Product Code Categories:

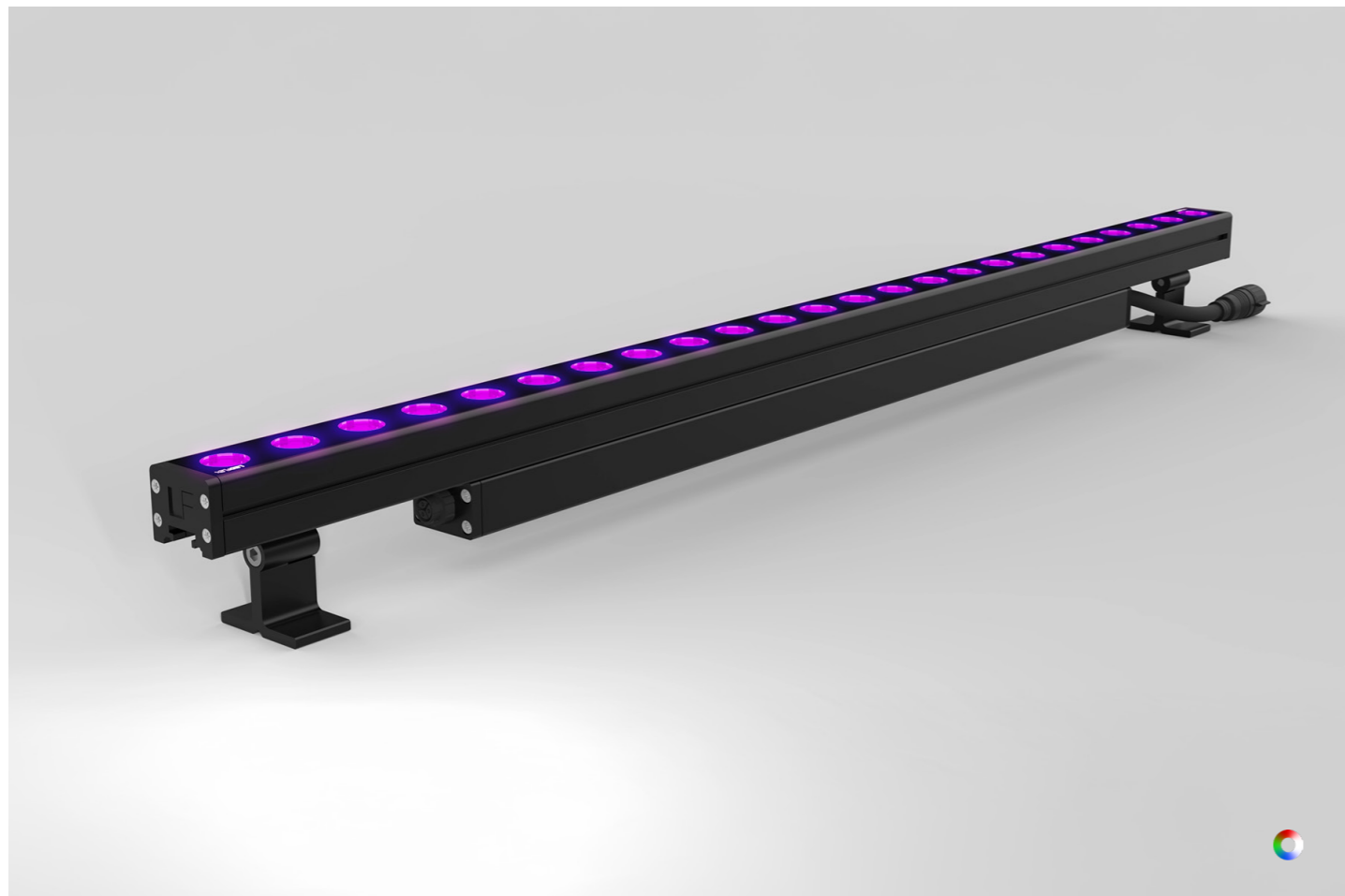
1 Family	2 Size	3 Finish	4 Beam Angle	5 Color Variant	6 Power & Length	7 Driver
----------	--------	----------	--------------	-----------------	------------------	----------

Sample Product Code: RO40B25RGB206X

1. Family	Code	2. Size	Code	3. Finish	Code
Rigid Optico Element	RO	40mm 1.57in.	40	Black Grey White	B G W

4. Beam Angle	Code	5. Colour Variant	Code	6. Power & Length	Code
25° 35° 50° 20°x40°	25 35 50 2040	RGB	RGB	20W & 600mm 6.10W & 23.62in. 30W & 900mm 9.14W & 35.43in. 40W & 1200mm 12.19W & 47.24in.	20 6 30 9 40 12

7. Driver	Code
DMX-RDM	X



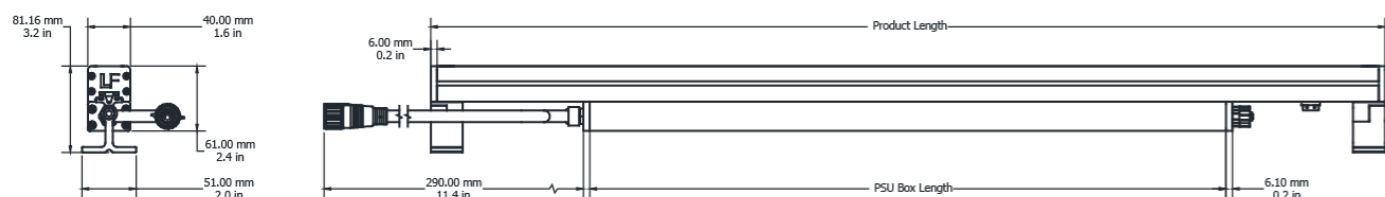
Rigid Optico Element 40 RGBW

Electrical Output & Data

Power Consumption	20 30 40 W	Max Power Length	38.4m 95.9ft
Voltage	100-277V AC	CRI	80
Beam Angle	20° X 40° 25° 35° 50°		
Ambient Temperature	-20°C to 55°C -4°F to 131°F		



Technical Drawing



Product Code Builder

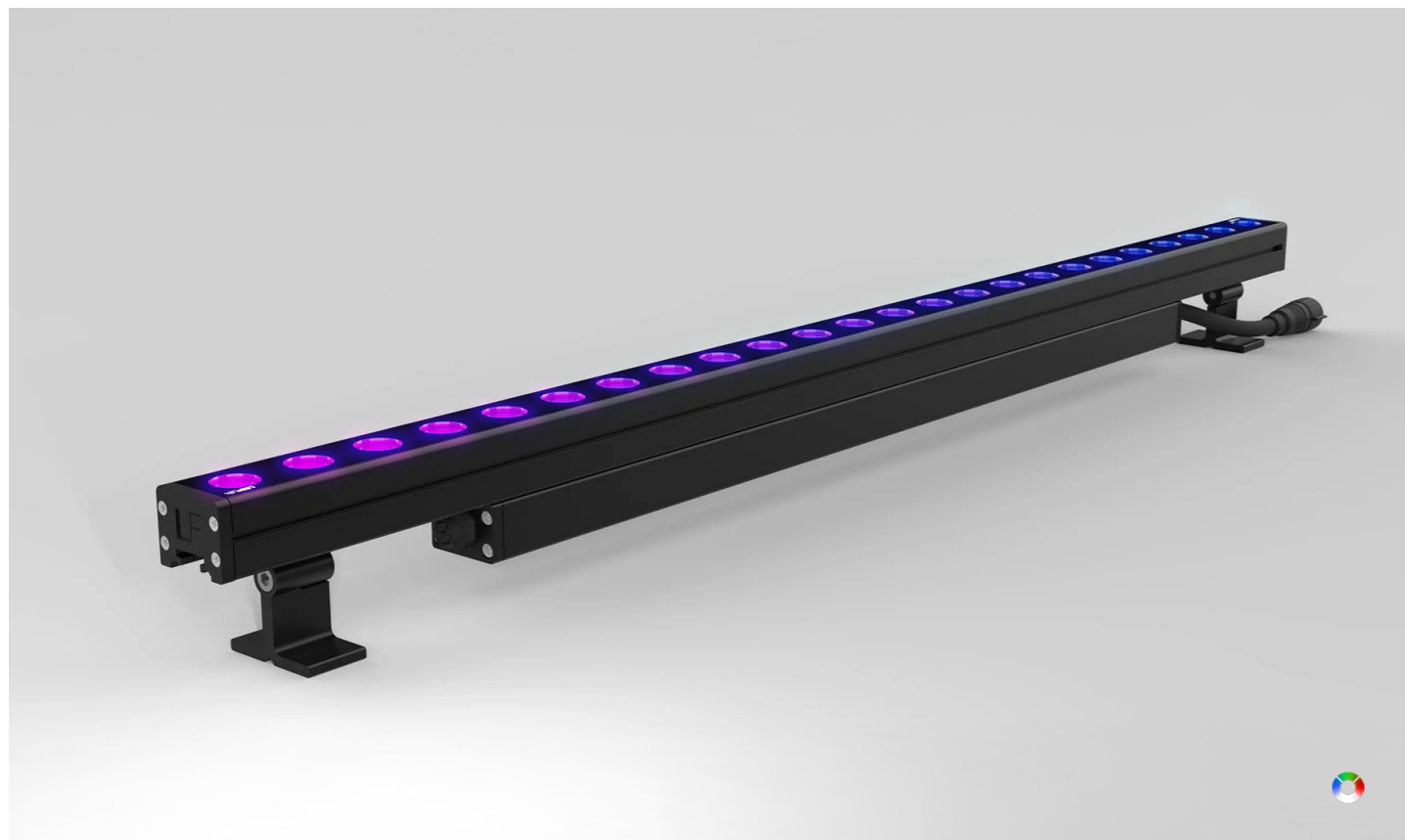
- Select one option from each category based on your project requirements (family, size, finish, optics, colour temperature, power, length, and control).
- Each selection corresponds to a specific code shown alongside the option.
- Combine the codes in sequence to generate the final product SKU.

Product Code Categories:

1 Family	2 Size	3 Finish	4 Beam Angle	5 Color Variant	6 CCT	7 Power & Length	8 Driver
----------	--------	----------	--------------	-----------------	-------	------------------	----------

Sample Product Code: RO40B25RW30206X

1. Family	Code	2. Size	Code	3. Finish	Code	4. Beam Angle	Code	5. Colour Variant	Code	6. CCT	Code	7. Power & Length	Code	8. Driver	Code
Rigid Optico Element	RO	40mm 1.57in.	40	Black Grey White	B G W	25° 35° 50° 20°x40°	25 35 50 2040	RGBW	RW	3000K 4000K 6500K	30 40 65	20W & 600mm 6.10W & 23.62in. 30W & 900mm 9.14W & 35.43in. 40W & 1200mm 12.19W & 47.24in.	20 6 30 9 40 12	DMX-RDM	X



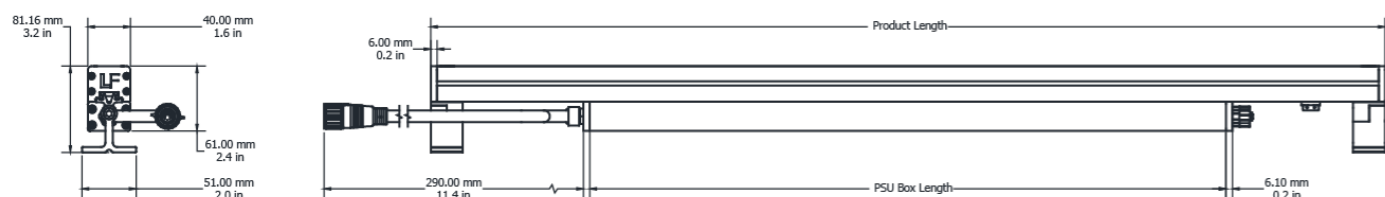
Rigid Optico Element 40 RGBW Pixel

Electrical Output & Data

Power Consumption	20 30 40 W	Max Power Length	60m 196.8ft
Voltage	100-277V AC	CRI	80
Beam Angle	20° x 40° 25° 35° 50°		
Ambient Temperature	-20°C to 50°C -4°F to 122°F		



Technical Drawing



Product Code Builder

- Select one option from each category based on your project requirements (family, size, finish, optics, colour temperature, power, length, and control).
- Each selection corresponds to a specific code shown alongside the option.
- Combine the codes in sequence to generate the final product SKU.

Product Code Categories:

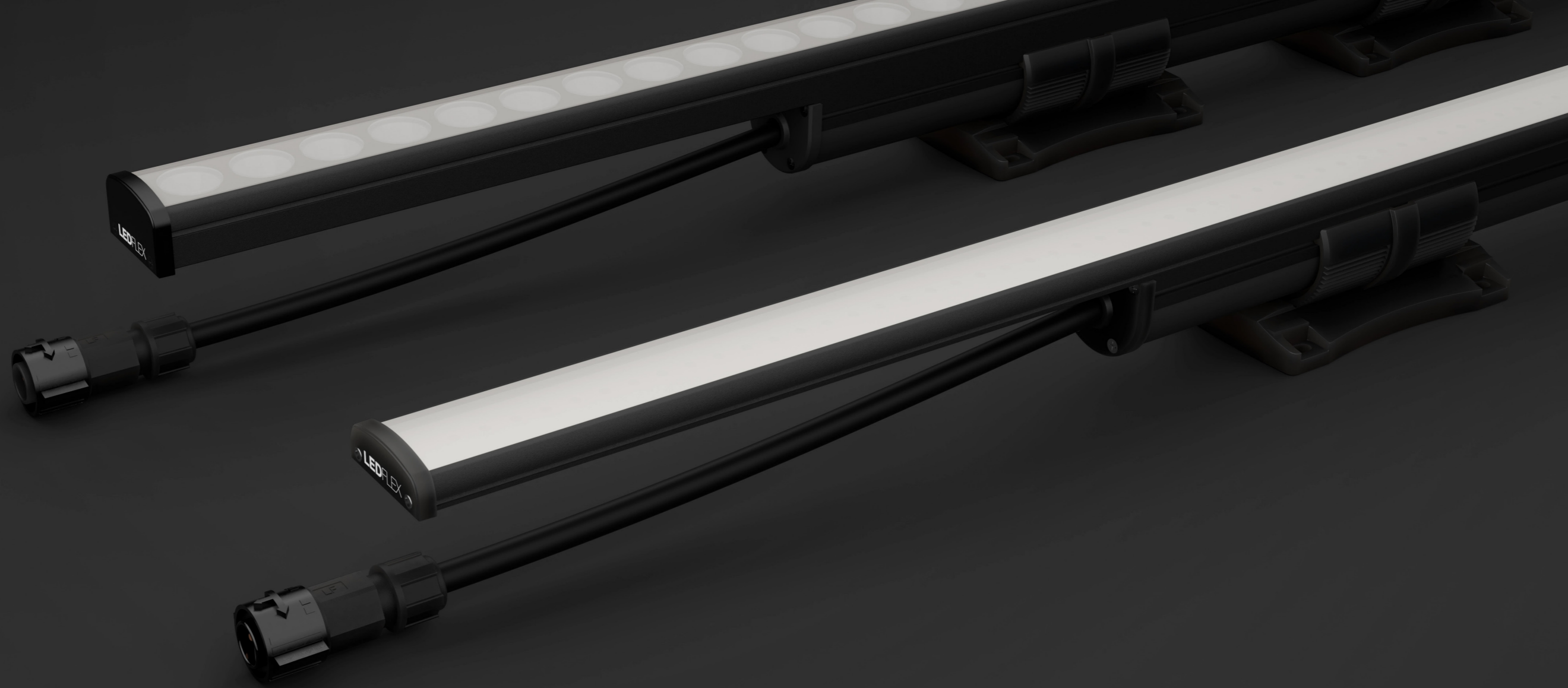
1 Family	2 Size	3 Finish	4 Beam Angle	5 Colour Variant	6 CCT	7 Power & Length	8 Pixel	9 Driver
----------	--------	----------	--------------	------------------	-------	------------------	---------	----------

Sample Product Code: RO40B25RW30206PX

1. Family	Code	2. Size	Code	3. Finish	Code
Rigid Optico Element	RO	40mm 1.57in.	40	Black Grey White	B G W

4. Beam Angle	Code	5. Colour Variant	Code	6. CCT	Code
25°	25	RGBW	RW	3000K ●	30
35°	35			4000K ●	40
50°	50			6500K ●	65
20°x40°	2040				

7. Power & Length	Code	8. Pixel	Code	9. Driver	Code
20W & 600mm 6.10W & 23.62in.	20 6	12, 18 & 24 Pixels	P	DMX-RDM	X
30W & 900mm 9.14W & 35.43in.	30 9				
40W & 1200mm 12.19W & 47.24in.	40 12				



Rigid Optico Intra

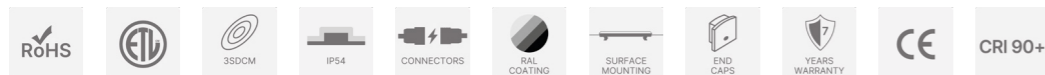
Rigid Optico Intra is an interior wall washing range designed for smooth, controlled vertical illumination across architectural surfaces. The range includes two fixtures: Intra Cove, featuring diffuser optics and wide beam angles for visually discreet cove applications, and Intra Washer, using collimating LED lens optics with symmetric and asymmetric distributions for higher-precision wall wash performance. Available in 2100K to 5700K CCT options, Intra offers specification flexibility across interior schemes. Plug-and-play connectors and adjustable $\pm 90^\circ$ rotational brackets support fast installation, accurate beam control, and consistent results across continuous runs.



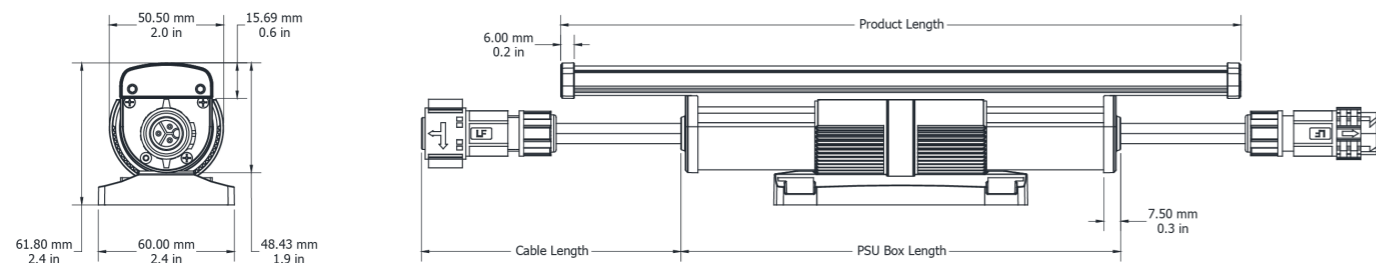
Rigid Optico Intra Cove

Electrical Output & Data

Power Consumption	300mm - 3 5 10 W 1200mm - 12 20 40 W	Max Power Length	60m 196.8ft
Voltage	120-277V AC	CRI	90
Beam Angle	115°		
Ambient Temperature	-20°C to 50°C -4°F to 122°F		



Technical Drawing



Product Code Builder

- Select one option from each category based on your project requirements (family, size, finish, optics, colour temperature, power, length, and control).
- Each selection corresponds to a specific code shown alongside the option.
- Combine the codes in sequence to generate the final product SKU.

Product Code Categories:

1 Family	2 Finish	3 CRI	4 CCT	5 Power	6 Length	7 Driver
----------	----------	-------	-------	---------	----------	----------

Sample Product Code: ROICBC2133S

1. Family	Code	2. Finish	Code	3. CRI	Code
Rigid Optico Intra Cove	ROIC	Black Grey White	B G W	CRI 90+	C

4. CCT	Code	5. Power	Code	6. Length	Code
2100K ●	21	3W	3	300mm (3W, 5W, 10W)	3
2700K ●	27	5W	5	1200mm (12W, 20W, 40W)	12
3000K ●	30	10W	10		
3500K ●	35	12W	12		
4000K ●	40	20W	20		
5700K ●	57	40W	40		

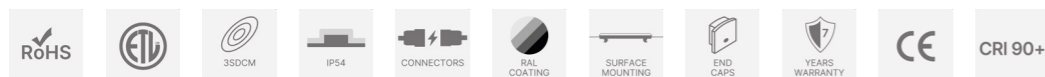
7. Driver	Code
Switching	S
0-10V	V
DMX-RDM	X



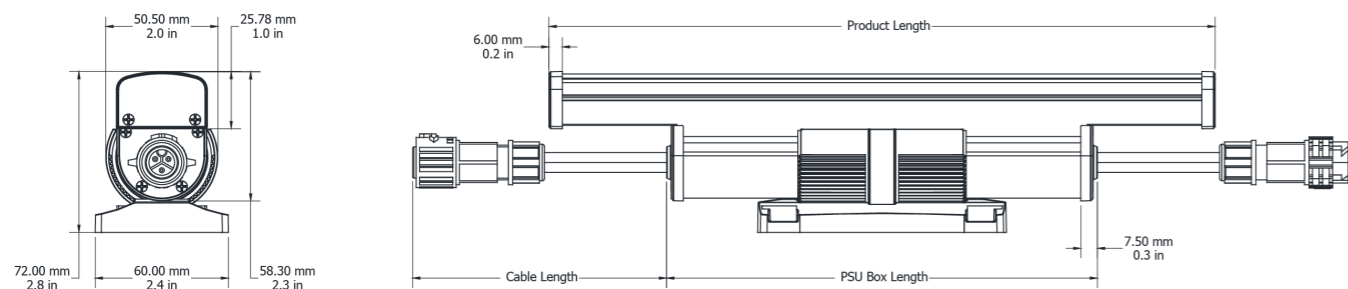
Rigid Optico Intra Washer

Electrical Output & Data

Power Consumption	300mm - 3 5 10 W 1200mm - 12 20 40 W	Max Power Length	60m 196.8ft
Voltage	120-277V AC	CRI	90
Beam Angle	10° 15° 30° 60° 80° 60° X 30°		
Ambient Temperature	-20°C to 50°C -4°F to 122°F		



Technical Drawing



Product Code Builder

- Select one option from each category based on your project requirements (family, size, finish, optics, colour temperature, power, length, and control).
- Each selection corresponds to a specific code shown alongside the option.
- Combine the codes in sequence to generate the final product SKU.

Product Code Categories:

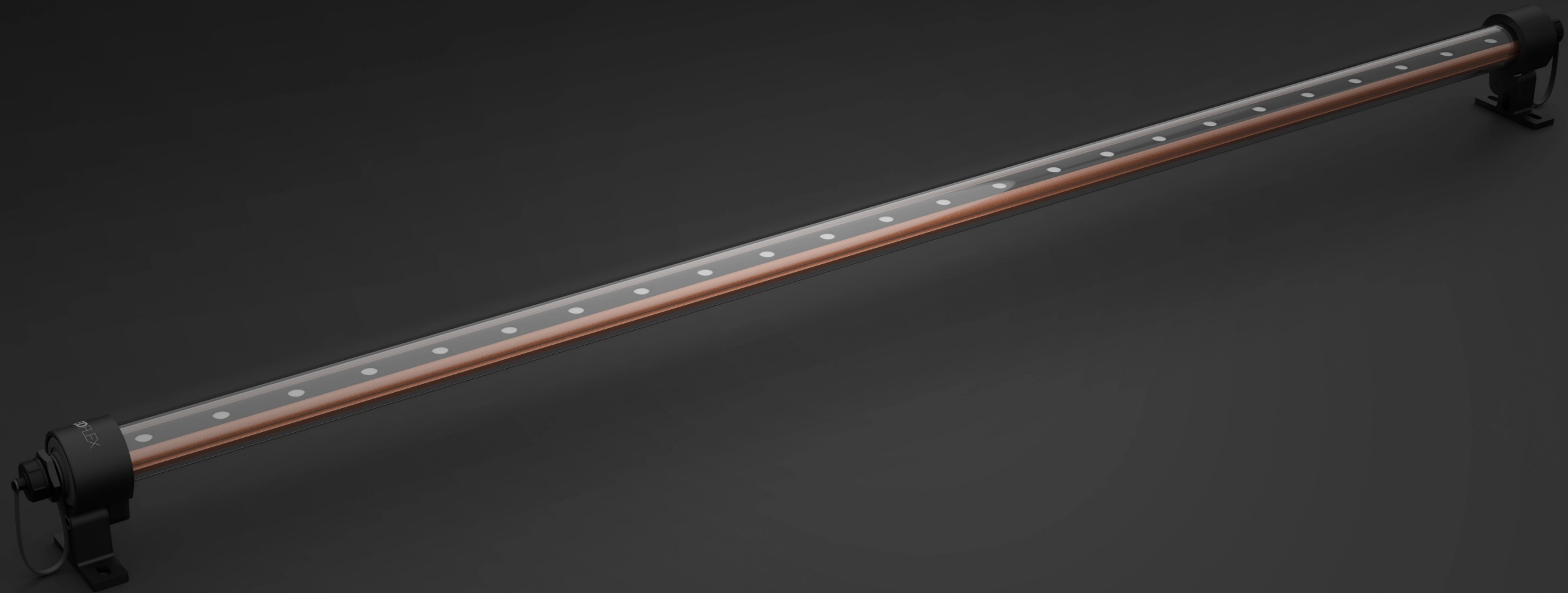
1 Family	2 Finish	3 Beam Angle	4 CRI (Optional)	5 CCT	6 Power	7 Length	8 Driver
----------	----------	--------------	------------------	-------	---------	----------	----------

Sample Product Code: ROIWB10C2133S

1. Family	Code	2. Finish	Code	3. Beam Angle	Code
Rigid Optico Intra Washer	ROIW	Black	B	10°	10
		Grey	G	15°	15
		White	W	30°	30
				60°	60
				80°	80
				60°x30°	6030

4. CRI	Code	5. CCT	Code	6. Power	Code
CRI 90+	C	2100K	21	3W	3
		2700K	27	5W	5
		3000K	30	10W	10
		3500K	35	12W	12
		4000K	40	20W	20
		5700K	57	40W	40

7. Length	Code	8. Driver	Code
300mm (3W, 5W, 10W)	3	Switching	S
1200mm (12W, 20W, 40W)	12	0-10V	V
		DMX-RDM	X



Rigid Optico Aqua

Rigid Optico Aqua is a high-performance LED fixture built for submerged wall washing, delivering controlled vertical illumination in fully submerged environments. Featuring precision angle adjustment for accurate beam alignment, it supports consistent results across wet-zone architectural surfaces. Constructed in marine-grade 316L stainless steel with IP68 ingress protection, Rigid Optico Aqua is engineered for long-term performance in high-humidity and corrosive conditions.



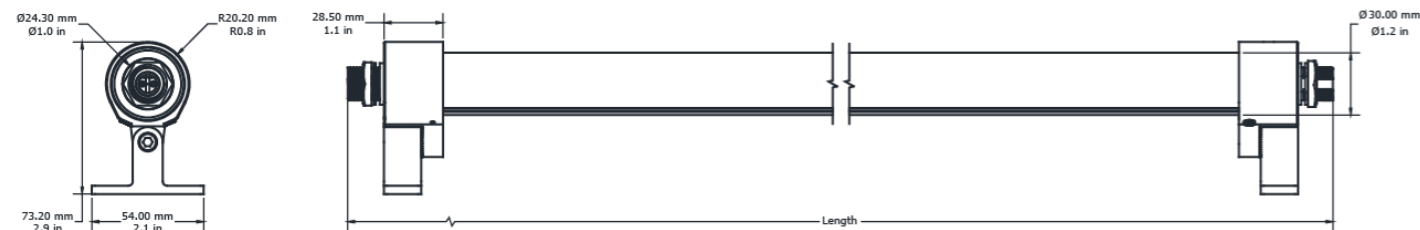
Rigid Optico Aqua

Electrical Output & Data

Power Consumption	6 12 24 W	Max Power Length	74.4m 24.4ft
Voltage	24V DC	CRI	90
Beam Angle	12° 20° 30° 40° 20 X 40°		
Ambient Temperature	-20°C to 40°C -4°F to 104°F		



Technical Drawing



Product Code Builder

- Select one option from each category based on your project requirements (family, size, finish, optics, colour temperature, power, length, and control).
- Each selection corresponds to a specific code shown alongside the option.
- Combine the codes in sequence to generate the final product SKU.

Product Code Categories:

1 Family	2 Finish	3 Beam Angle	4 CRI (Optional)	5 CCT	6 Power & Length
----------	----------	--------------	------------------	-------	------------------

Sample Product Code: ROAB12C2763

1. Family	Code	3. Finish	Code	4. Beam Angle	Code	5. CRI	Code	6. CCT	Code	7. Power & Length	Code
Rigid Optico Aqua	ROA	Black	B	12°	12	CRI 90+	C	2700K	27	6W & 310mm	6 3
				20°	20			3000K	30	1.83W & 12.20 n	
				30°	30			4000K	40	12W & 550mm	12 5
				40°	40			5700K	57	3.66W & 21.65in	
				20°x40°	2040			6500K	65	24W & 1030mm	24 10
										7.32W & 40.55in	



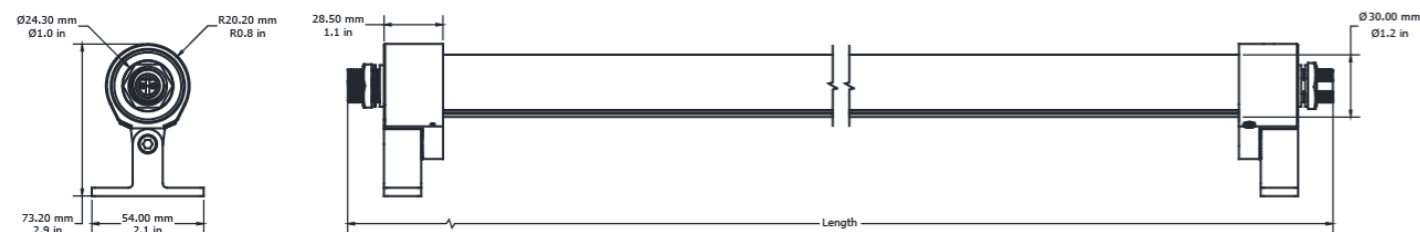
Rigid Optico Aqua RGB

Electrical Output & Data

Power Consumption	6 12 24 W	Max Power Length	74.4m 24.4ft
Voltage	24V DC	CRI	80
Beam Angle	110°		
Ambient Temperature	-20°C to 40°C -4°F to 104°F		



Technical Drawing



Product Code Builder

- Select one option from each category based on your project requirements (family, size, finish, optics, colour temperature, power, length, and control).
- Each selection corresponds to a specific code shown alongside the option.
- Combine the codes in sequence to generate the final product SKU.

Product Code Categories:

1 Family	2 Finish	3 Beam Angle	4 Color Variant	5 Power & Length
----------	----------	--------------	-----------------	------------------

Sample Product Code: ROAB110RGB63

1. Family	Code	2. Finish	Code	3. Beam Angle	Code
Rigid Optico Aqua	ROA	Black	B	110°	110

4. Colour Variant	Code	5. Power & Length	Code
RGB	RGB	6W & 310mm 1.83W & 12.20in	6 3
		12W & 550mm 3.66W & 21.65in	12 5
		24W & 1030mm 7.32W & 40.55in	24 10



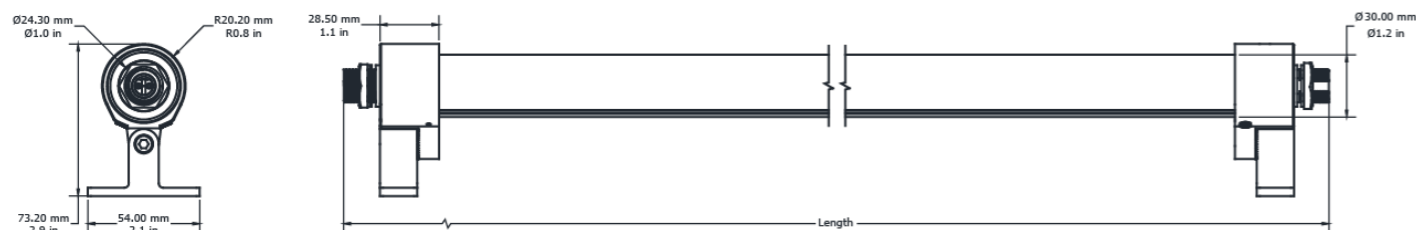
Rigid Optico Aqua RGBW

Electrical Output & Data

Power Consumption	6 12 24 W	Max Power Length	74.4m 24.4ft
Voltage	24V DC	CRI	80
Beam Angle	110°		
Ambient Temperature	-20°C to 40°C -4°F to 104°F		



Technical Drawing



Product Code Builder

- Select one option from each category based on your project requirements (family, size, finish, optics, colour temperature, power, length, and control).
- Each selection corresponds to a specific code shown alongside the option.
- Combine the codes in sequence to generate the final product SKU.

Product Code Categories:

1 Family	3 Finish	4 Beam Angle	5 Color Variant	6 CCT	7 Power & Length
----------	----------	--------------	-----------------	-------	------------------

Sample Product Code: ROAB110RW6063

1. Family	Code	3. Finish	Code	4. Beam Angle	Code
Rigid Optico Aqua	ROA	Black	B	110°	110

5. Colour Variant	Code	6. CCT	Code	7. Power & Length	Code
RGBW	RW	6000K	60	6W & 310mm 1.83W & 12.20in	6 3
				12W & 550mm 3.66W & 21.65in	12 5
				24W & 1030mm 7.32W & 40.55in	24 10



Optico Accesories

Optico Accessories offer complementary add-ons for the entire Rigid Optico family, designed to enhance visual comfort and system integration. Featuring linear louvres for improved glare control and a range of cables for linking multiple fixtures across extended run lengths, the accessory range supports cleaner detailing and consistent illumination across applications.

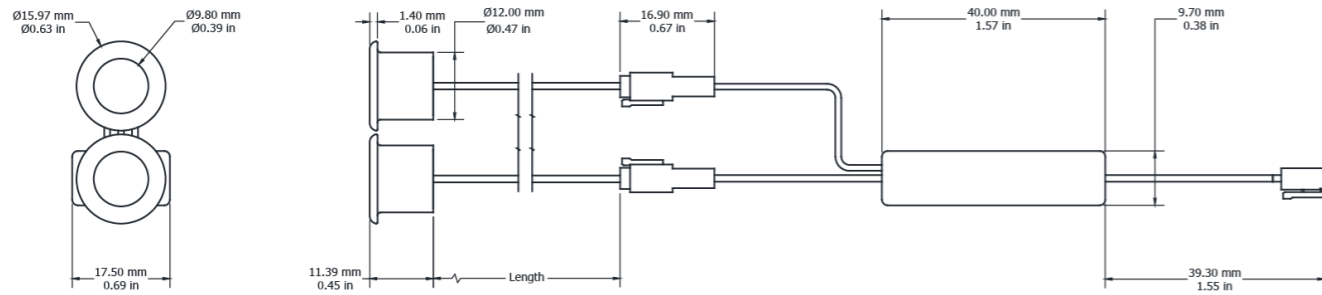
Starter Cable Kit



Electrical Output & Data

Material	PVC
IP Rating	IP67
Voltage	100-277V AC
Connection	54.1mm x 22.5mm 2.12in x 0.88in

Technical Drawing



Technical Specifications

Type	Driver	Material	Material Colour	Length	Product Code
Starter Cable Kit	Switching	PVC	Black	300mm 11.81in	ROSTKITS3
Starter Cable Kit	Dali	PVC	Black	300mm 11.81in	ROSTKITD3
Starter Cable Kit	DMX	PVC	Black	300mm 11.81in	ROSTKITX3
Starter Cable Kit	0-10V	PVC	Black	300mm 11.81in	ROSTKITV3
Starter Cable Kit	Switching	PVC	Black	2000mm 78.74in	ROSTKITS20
Starter Cable Kit	Dali	PVC	Black	2000mm 78.74in	ROSTKITD20
Starter Cable Kit	DMX	PVC	Black	2000mm 78.74in	ROSTKITX20
Starter Cable Kit	0-10V	PVC	Black	2000mm 78.74in	ROSTKITV20
Starter Cable Kit	Switching	PVC	Black	6000mm 236.22in	ROSTKITS60
Starter Cable Kit	Dali	PVC	Black	6000mm 236.22in	ROSTKITD60
Starter Cable Kit	DMX	PVC	Black	6000mm 236.22in	ROSTKITX60
Starter Cable Kit	0-10V	PVC	Black	6000mm 236.22in	ROSTKITV60

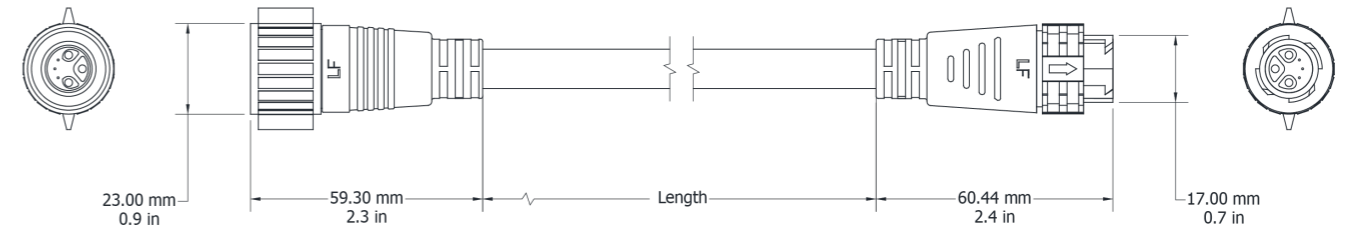
Extension Cable



Electrical Output & Data

Material	PVC
IP Rating	IP67
Voltage	100-277V AC
Connection	Male - 60.44mm x 17mm 2.37in x 0.66in Female - 59.30mm x 23mm 2.33in x 0.90in

Technical Drawing



Technical Specifications

Type	Driver	Material	Material Colour	Length	Product Code
Extension Cable	Switching	PVC	Black	300mm 11.81in	ROEXCABS3
Extension Cable	Dali	PVC	Black	300mm 11.81in	ROEXCABD3
Extension Cable	DMX	PVC	Black	300mm 11.81in	ROEXCABX3
Extension Cable	0-10V	PVC	Black	300mm 11.81in	ROEXCABV3
Extension Cable	Switching	PVC	Black	2000mm 78.74in	ROEXCABS20
Extension Cable	Dali	PVC	Black	2000mm 78.74in	ROEXCABD20
Extension Cable	DMX	PVC	Black	2000mm 78.74in	ROEXCABX20
Extension Cable	0-10V	PVC	Black	2000mm 78.74in	ROEXCABV20
Extension Cable	Switching	PVC	Black	6000mm 236.22in	ROEXCABS60
Extension Cable	Dali	PVC	Black	6000mm 236.22in	ROEXCABD60
Extension Cable	DMX	PVC	Black	6000mm 236.22in	ROEXCABX60
Extension Cable	0-10V	PVC	Black	6000mm 236.22in	ROEXCABV60

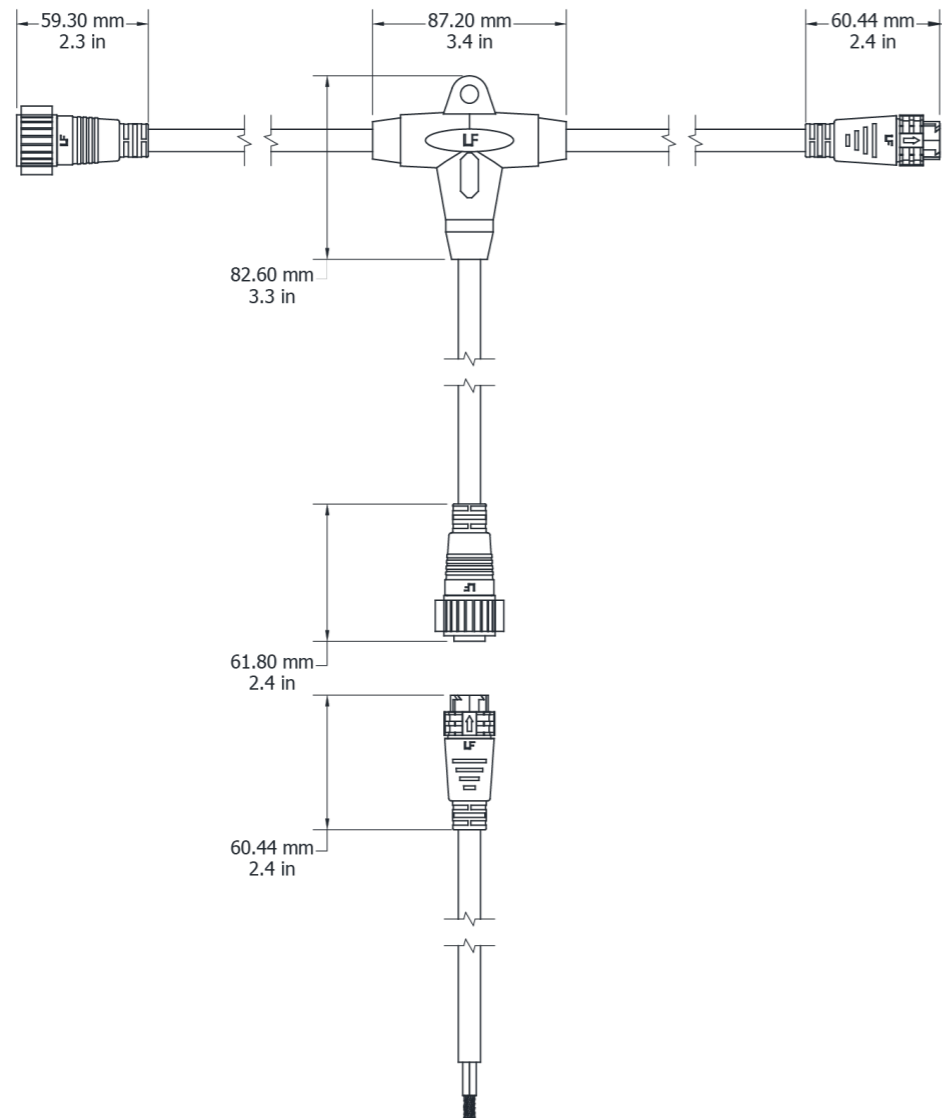
Power Injector Kit



Electrical Output & Data

Material	PVC
IP Rating	IP67
Voltage	100-277V AC
Connection	Male: 60.44mm 2.4in Female: 59.30mm 2.3in

Technical Drawing



Technical Specifications

Type	Driver	Material	Material Colour	Length	Product Code
Power Injector Kit	Dali	PVC	Black	300mm 11.81in	ROPWRINJD3
Power Injector Kit	DMX	PVC	Black	300mm 11.81in	ROPWRINJX3
Power Injector Kit	0-10V	PVC	Black	300mm 11.81in	ROPWRINJV3
Power Injector Kit	Dali	PVC	Black	2000mm 78.74in	ROPWRINJD20
Power Injector Kit	DMX	PVC	Black	2000mm 78.74in	ROPWRINJX20
Power Injector Kit	0-10V	PVC	Black	2000mm 78.74in	ROPWRINJV20
Power Injector Kit	Dali	PVC	Black	6000mm 236.22in	ROPWRINJD60
Power Injector Kit	DMX	PVC	Black	6000mm 236.22in	ROPWRINJX60
Power Injector Kit	0-10V	PVC	Black	6000mm 236.22in	ROPWRINJV60

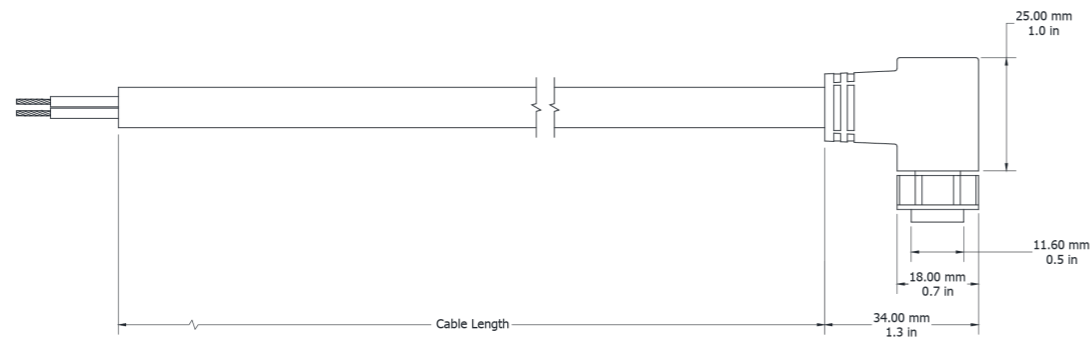
Rigid Optico Aqua Starter Cable



Electrical Output & Data

Material	PVC
IP	IP68
Voltage	24V
Connection	36.30mm x 11.6mm 1.4in x 0.45in

Technical Drawing



Technical Specifications

Type	Material	Material Colour	Length	Product Code
Starter Cable 2 Core	PVC	Black	5000 mm 196.85in	ROASTCABSC2C50

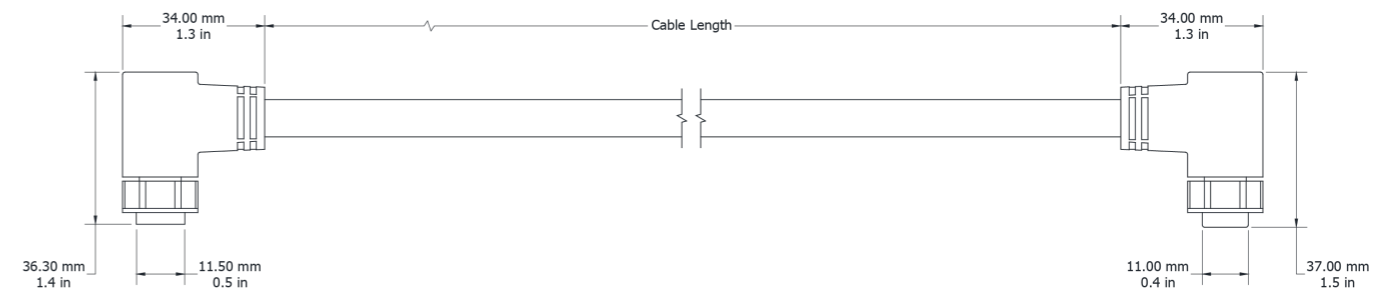
Rigid Optico Aqua Extension Cable



Electrical Output & Data

Material	PVC
IP	IP68
Voltage	24V
Connection	Male: 37mm x 11mm 1.45in x 0.43in Female: 36.30mm x 11.5mm 1.42in x 0.45in

Technical Drawing



Technical Specifications

Type	Material	Material Colour	Length	Product Code
Extension Cable	PVC	Black	200mm 78.75in	ROAEXCABSC2C2
Extension Cable	PVC	Black	1000mm 39.37in	ROAEXCABSC2C10
Extension Cable	PVC	Black	5000mm 196.85in	ROAEXCABSC2C50

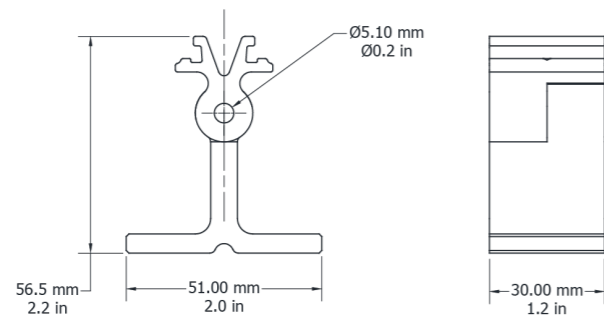
Adjustable Bracket 56.5mm



Electrical Output & Data

Material	Aluminium
Material Colour	Black Grey White
Dimensions	30mm x 56.5mm 1.18in x 2.22in

Technical Drawing



Technical Specifications

Type	Material	Material Colour	Height	Product Code
Adjustable Bracket	Aluminum	Grey	56.5mm 2.22in	RO40GAB56
Adjustable Bracket	Aluminum	White	56.5mm 2.22in	RO40WAB56
Adjustable Bracket	Aluminum	Black	56.5mm 2.22in	RO40BAB56

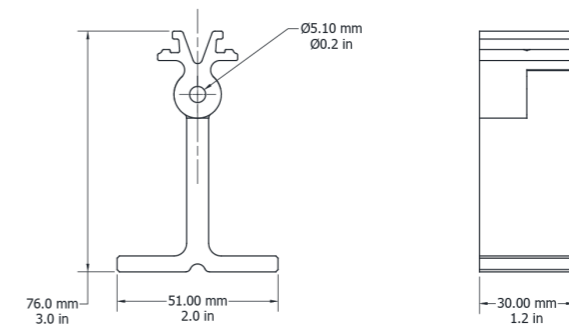
Adjustable Bracket 76mm



Electrical Output & Data

Material	Aluminium
Material Colour	Black Grey White
Dimensions	30mm x 76mm 1.18in x 2.99in

Technical Drawing



Technical Specifications

Type	Material	Material Colour	Height	Product Code
Adjustable Bracket	Aluminum	Grey	76mm 2.99in	RO40GAB76
Adjustable Bracket	Aluminum	White	76mm 2.99in	RO40WAB76
Adjustable Bracket	Aluminum	Black	76mm 2.99in	RO40BAB76

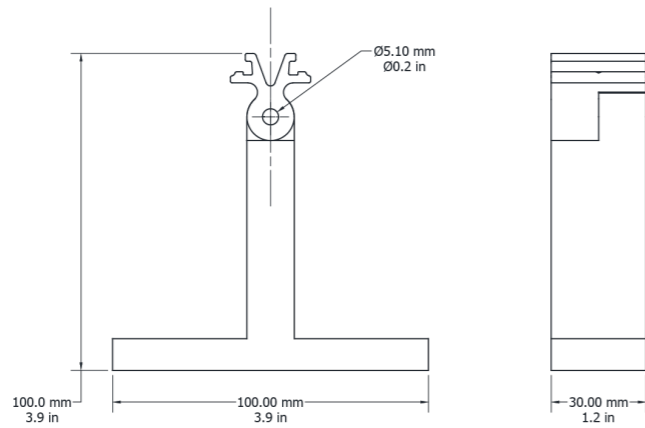
Wall Mount Bracket 100mm



Electrical Output & Data

Material	Aluminium
Material Colour	Black Grey White
Dimensions	30mm x 100mm 1.18in x 3.93in

Technical Drawing



Technical Specifications

Type	Material	Material Colour	Height	Product Code
Wall Mount Bracket	Aluminum	Grey	100mm 3.93in	RO40GWMB100
Wall Mount Bracket	Aluminum	White	100mm 3.93in	RO40WWMB100
Wall Mount Bracket	Aluminum	Black	100mm 3.93in	RO40BWMB100

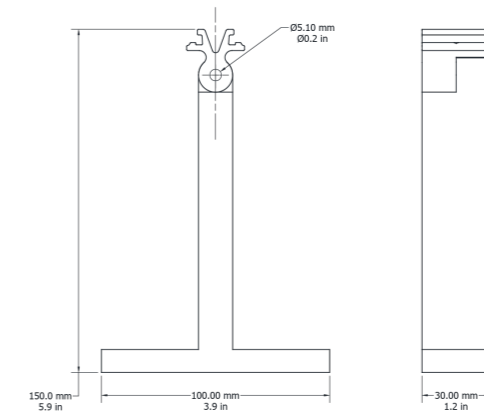
Wall Mount Bracket 150mm



Electrical Output & Data

Material	Aluminium
Material Colour	Black Grey White
Dimensions	30mm x 150mm 1.18in x 5.90in

Technical Drawing



Technical Specifications

Type	Material	Material Colour	Height	Product Code
Wall Mount Bracket	Aluminum	Grey	150mm 5.90in	RO40GWMB150
Wall Mount Bracket	Aluminum	White	150mm 5.90in	RO40WWMB150
Wall Mount Bracket	Aluminum	Black	150mm 5.90in	RO40BWMB150

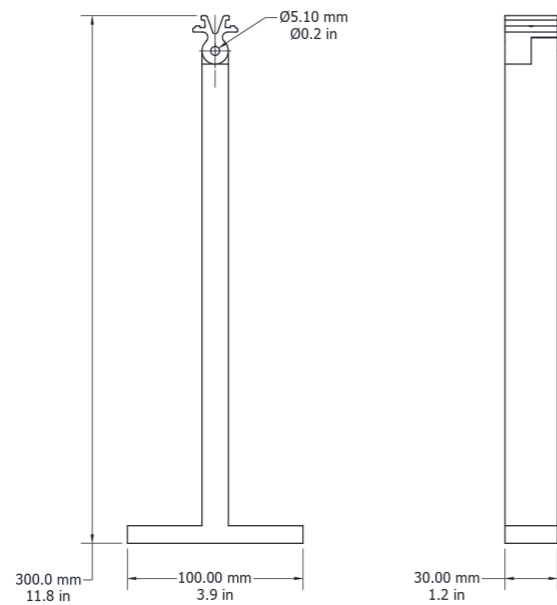
Wall Mount Bracket 300mm



Electrical Output & Data

Material	Aluminium
Material Colour	Black Grey White
Dimensions	30mm x 300mm 1.18in x 11.8in

Technical Drawing



Technical Specifications

Type	Material	Material Colour	Height	Product Code
Wall Mount Bracket	Aluminum	Grey	300mm 11.8in	RO40GWMB300
Wall Mount Bracket	Aluminum	White	300mm 11.8in	RO40WWMB300
Wall Mount Bracket	Aluminum	Black	300mm 11.8in	RO40BWMB300

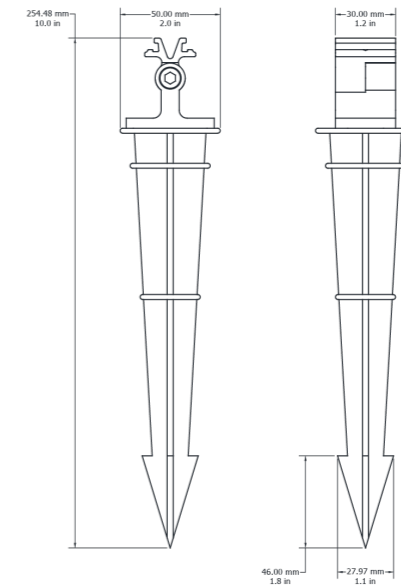
Spike Bracket



Electrical Output & Data

Material	Aluminium & Plastic
Material Colour	Black
Dimensions	30mm x 254.48mm 1.18in x 10.01in

Technical Drawing



Technical Specifications

Type	Material	Material Colour	Height	Product Code
Spike Bracket	Aluminum & Plastic	Black	254.48mm 10.01in	RO40SB

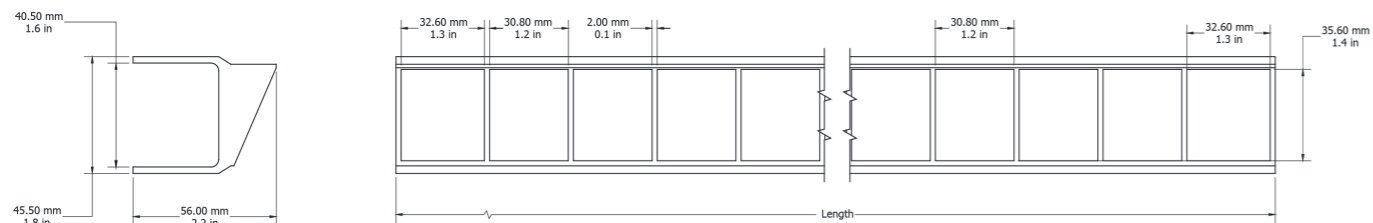


Element 40 Anti-Glare Asymmetric Louvre

Technical Specifications

- Material** Aluminium
- Material Colour** Black | Grey | White
- Dimensions** 56mm x 45.50mm | 2.20in x 1.79in

Technical Drawing



Technical Specifications

Type	Material	Material Colour	Length	Product Code
Anti-Glare Asymmetric Louvre Single Colour	Aluminium	Black	300mm 11.8in	RO40BAGALSC3
Anti-Glare Asymmetric Louvre Single Colour	Aluminium	Grey	300mm 11.8in	RO40GAGALSC3
Anti-Glare Asymmetric Louvre Single Colour	Aluminium	White	300mm 11.8in	RO40WAGALSC3
Anti-Glare Asymmetric Louvre RGB	Aluminium	Black	300mm 11.8in	RO40BAGALRGB3
Anti-Glare Asymmetric Louvre RGB	Aluminium	Grey	300mm 11.8in	RO40GAGALRGB3
Anti-Glare Asymmetric Louvre RGB	Aluminium	White	300mm 11.8in	RO40WAGALRGB3
Anti-Glare Asymmetric Louvre RGBW	Aluminium	Black	300mm 11.8in	RO40BAGALRW3
Anti-Glare Asymmetric Louvre RGBW	Aluminium	Grey	300mm 11.8in	RO40GAGALRW3
Anti-Glare Asymmetric Louvre RGBW	Aluminium	White	300mm 11.8in	RO40WAGALRW3
Anti-Glare Asymmetric Louvre Dynamic White	Aluminium	Black	300mm 11.8in	RO40BAGALDW3
Anti-Glare Asymmetric Louvre Dynamic White	Aluminium	Grey	300mm 11.8in	RO40GAGALDW3
Anti-Glare Asymmetric Louvre Dynamic White	Aluminium	White	300mm 11.8in	RO40WAGALDW3
Anti-Glare Asymmetric Louvre Single Colour	Aluminium	Black	600mm 23.62in	RO40BAGALSC6
Anti-Glare Asymmetric Louvre Single Colour	Aluminium	Grey	600mm 23.62in	RO40GAGALSC6
Anti-Glare Asymmetric Louvre Single Colour	Aluminium	White	600mm 23.62in	RO40WAGALSC6
Anti-Glare Asymmetric Louvre RGB	Aluminium	Black	600mm 23.62in	RO40BAGALRGB6
Anti-Glare Asymmetric Louvre RGB	Aluminium	Grey	600mm 23.62in	RO40GAGALRGB6
Anti-Glare Asymmetric Louvre RGB	Aluminium	White	600mm 23.62in	RO40WAGALRGB6
Anti-Glare Asymmetric Louvre RGBW	Aluminium	Black	600mm 23.62in	RO40BAGALRW6
Anti-Glare Asymmetric Louvre RGBW	Aluminium	Grey	600mm 23.62in	RO40GAGALRW6
Anti-Glare Asymmetric Louvre RGBW	Aluminium	White	600mm 23.62in	RO40WAGALRW6

Technical Specifications

Type	Material	Material Colour	Length	Product Code
Anti-Glare Asymmetric Louvre Dynamic White	Aluminium	Black	600mm 23.62in	RO40BAGALDW6
Anti-Glare Asymmetric Louvre Dynamic White	Aluminium	Grey	600mm 23.62in	RO40GAGALDW6
Anti-Glare Asymmetric Louvre Dynamic White	Aluminium	White	600mm 23.62in	RO40WAGALDW6
Anti-Glare Asymmetric Louvre Single Colour	Aluminium	Black	900mm 35.43in	RO40BAGALSC9
Anti-Glare Asymmetric Louvre Single Colour	Aluminium	Grey	900mm 35.43in	RO40GAGALSC9
Anti-Glare Asymmetric Louvre Single Colour	Aluminium	White	900mm 35.43in	RO40WAGALSC9
Anti-Glare Asymmetric Louvre RGB	Aluminium	Black	900mm 35.43in	RO40BAGALRGB9
Anti-Glare Asymmetric Louvre RGB	Aluminium	Grey	900mm 35.43in	RO40GAGALRGB9
Anti-Glare Asymmetric Louvre RGB	Aluminium	White	900mm 35.43in	RO40WAGALRGB9
Anti-Glare Asymmetric Louvre RGBW	Aluminium	Black	900mm 35.43in	RO40BAGALRW9
Anti-Glare Asymmetric Louvre RGBW	Aluminium	Grey	900mm 35.43in	RO40GAGALRW9
Anti-Glare Asymmetric Louvre RGBW	Aluminium	White	900mm 35.43in	RO40WAGALRW9
Anti-Glare Asymmetric Louvre Dynamic White	Aluminium	Black	900mm 35.43in	RO40BAGALDW9
Anti-Glare Asymmetric Louvre Dynamic White	Aluminium	Grey	900mm 35.43in	RO40GAGALDW9
Anti-Glare Asymmetric Louvre Dynamic White	Aluminium	White	900mm 35.43in	RO40WAGALDW9
Anti-Glare Asymmetric Louvre Single Colour	Aluminium	Black	1200mm 35.43in	RO40BAGALSC12
Anti-Glare Asymmetric Louvre Single Colour	Aluminium	Grey	1200mm 47.24in	RO40GAGALSC12
Anti-Glare Asymmetric Louvre Single Colour	Aluminium	White	1200mm 47.24in	RO40WAGALSC12
Anti-Glare Asymmetric Louvre RGB	Aluminium	Black	1200mm 47.24in	RO40BAGALRGB12
Anti-Glare Asymmetric Louvre RGB	Aluminium	Grey	1200mm 47.24in	RO40GAGALRGB12
Anti-Glare Asymmetric Louvre RGB	Aluminium	White	1200mm 47.24in	RO40WAGALRGB12

Technical Specifications

Type	Material	Material Colour	Length	Product Code
Anti-Glare Asymmetric Louvre RGBW	Aluminium	Black	1200mm 47.24in	RO40BAGALRW12
Anti-Glare Asymmetric Louvre RGBW	Aluminium	Grey	1200mm 47.24in	RO40GAGALRW12
Anti-Glare Asymmetric Louvre RGBW	Aluminium	White	1200mm 47.24in	RO40WAGALRW12
Anti-Glare Asymmetric Louvre Dynamic White	Aluminium	Black	1200mm 47.24in	RO40BAGALDW12
Anti-Glare Asymmetric Louvre Dynamic White	Aluminium	Grey	1200mm 47.24in	RO40GAGALDW12
Anti-Glare Asymmetric Louvre Dynamic White	Aluminium	White	1200mm 47.24in	RO40WAGALDW12

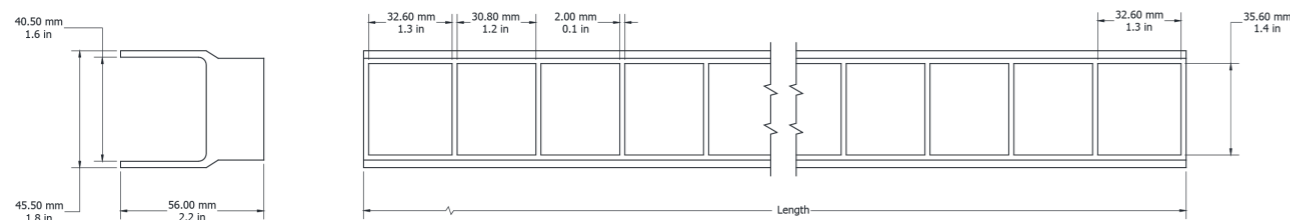


Element 40 Anti-Glare Symmetric Louvre

Technical Specifications

- Material** Aluminium
- Material Colour** Black | Grey | White
- Dimensions** 56mm x 45.50mm | 2.20in x 1.79in

Technical Drawing



Technical Specifications

Type	Material	Material Colour	Length	Product Code
Anti-Glare Symmetric Louvre Single Colour	Aluminium	Black	300mm 11.8in	RO40BAGSLSC3
Anti-Glare Symmetric Louvre Single Colour	Aluminium	Grey	300mm 11.8in	RO40GAGSLSC3
Anti-Glare Symmetric Louvre Single Colour	Aluminium	White	300mm 11.8in	RO40WAGSLSC3
Anti-Glare Symmetric Louvre RGB	Aluminium	Black	300mm 11.8in	RO40BAGSLRGB3
Anti-Glare Symmetric Louvre RGB	Aluminium	Grey	300mm 11.8in	RO40GAGSLRGB3
Anti-Glare Symmetric Louvre RGB	Aluminium	White	300mm 11.8in	RO40WAGSLRGB3
Anti-Glare Symmetric Louvre RGBW	Aluminium	Black	300mm 11.8in	RO40BAGSLRW3
Anti-Glare Symmetric Louvre RGBW	Aluminium	Grey	300mm 11.8in	RO40GAGSLRW3
Anti-Glare Symmetric Louvre RGBW	Aluminium	White	300mm 11.8in	RO40WAGSLRW3
Anti-Glare Symmetric Louvre Dynamic White	Aluminium	Black	300mm 11.8in	RO40BAGSLDW3
Anti-Glare Symmetric Louvre Dynamic White	Aluminium	Grey	300mm 11.8in	RO40GAGSLDW3
Anti-Glare Symmetric Louvre Dynamic White	Aluminium	White	300mm 11.8in	RO40WAGSLDW3
Anti-Glare Symmetric Louvre Single Colour	Aluminium	Black	600mm 23.62in	RO40BAGSLSC6
Anti-Glare Symmetric Louvre Single Colour	Aluminium	Grey	600mm 23.62in	RO40GAGSLSC6
Anti-Glare Symmetric Louvre Single Colour	Aluminium	White	600mm 23.62in	RO40WAGSLSC6
Anti-Glare Symmetric Louvre RGB	Aluminium	Black	600mm 23.62in	RO40BAGSLRGB6
Anti-Glare Symmetric Louvre RGB	Aluminium	Grey	600mm 23.62in	RO40GAGSLRGB6
Anti-Glare Symmetric Louvre RGB	Aluminium	White	600mm 23.62in	RO40WAGSLRGB6
Anti-Glare Symmetric Louvre RGBW	Aluminium	Black	600mm 23.62in	RO40BAGSLRW6
Anti-Glare Symmetric Louvre RGBW	Aluminium	Grey	600mm 23.62in	RO40GAGSLRW6
Anti-Glare Symmetric Louvre RGBW	Aluminium	White	600mm 23.62in	RO40WAGSLRW6

Technical Specifications

Type	Material	Material Colour	Length	Product Code
Anti-Glare Symmetric Louvre Dynamic White	Aluminium	Black	600mm 23.62in	RO40BAGSLDW6
Anti-Glare Symmetric Louvre Dynamic White	Aluminium	Grey	600mm 23.62in	RO40GAGSLDW6
Anti-Glare Symmetric Louvre Dynamic White	Aluminium	White	600mm 23.62in	RO40WAGSLDW6
Anti-Glare Symmetric Louvre Single Colour	Aluminium	Black	900mm 35.43in	RO40BAGSLSC9
Anti-Glare Symmetric Louvre Single Colour	Aluminium	Grey	900mm 35.43in	RO40GAGSLSC9
Anti-Glare Symmetric Louvre Single Colour	Aluminium	White	900mm 35.43in	RO40WAGSLSC9
Anti-Glare Symmetric Louvre RGB	Aluminium	Black	900mm 35.43in	RO40BAGSLRGB9
Anti-Glare Symmetric Louvre RGB	Aluminium	Grey	900mm 35.43in	RO40GAGSLRGB9
Anti-Glare Symmetric Louvre RGB	Aluminium	White	900mm 35.43in	RO40WAGSLRGB9
Anti-Glare Symmetric Louvre RGBW	Aluminium	Black	900mm 35.43in	RO40BAGSLRW9
Anti-Glare Symmetric Louvre RGBW	Aluminium	Grey	900mm 35.43in	RO40GAGSLRW9
Anti-Glare Symmetric Louvre RGBW	Aluminium	White	900mm 35.43in	RO40WAGSLRW9
Anti-Glare Symmetric Louvre Dynamic White	Aluminium	Black	900mm 35.43in	RO40BAGSLDW9
Anti-Glare Symmetric Louvre Dynamic White	Aluminium	Grey	900mm 35.43in	RO40GAGSLDW9
Anti-Glare Symmetric Louvre Dynamic White	Aluminium	White	900mm 35.43in	RO40WAGSLDW9
Anti-Glare Symmetric Louvre Single Colour	Aluminium	Black	1200mm 35.43in	RO40BAGSLSC12
Anti-Glare Symmetric Louvre Single Colour	Aluminium	Grey	1200mm 47.24in	RO40GAGSLSC12
Anti-Glare Symmetric Louvre Single Colour	Aluminium	White	1200mm 47.24in	RO40WAGSLSC12
Anti-Glare Symmetric Louvre RGB	Aluminium	Black	1200mm 47.24in	RO40BAGSLRGB12
Anti-Glare Symmetric Louvre RGB	Aluminium	Grey	1200mm 47.24in	RO40GAGSLRGB12
Anti-Glare Symmetric Louvre RGB	Aluminium	White	1200mm 47.24in	RO40WAGSLRGB12

Technical Specifications

Type	Material	Material Colour	Length	Product Code
Anti-Glare Symmetric Louvre RGBW	Aluminium	Black	1200mm 35.43in	RO40BAGSLRW12
Anti-Glare Symmetric Louvre RGBW	Aluminium	Grey	1200mm 47.24in	RO40GAGSLRW12
Anti-Glare Symmetric Louvre RGBW	Aluminium	White	1200mm 47.24in	RO40WAGSLRW12
Anti-Glare Symmetric Louvre Dynamic White	Aluminium	Black	1200mm 47.24in	RO40BAGSLDW12
Anti-Glare Symmetric Louvre Dynamic White	Aluminium	Grey	1200mm 47.24in	RO40GAGSLDW12
Anti-Glare Symmetric Louvre Dynamic White	Aluminium	White	1200mm 47.24in	RO40WAGSLDW12

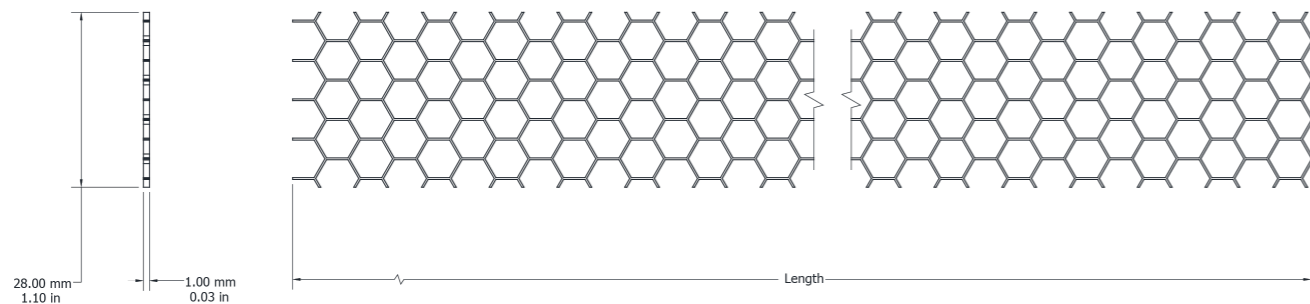


Element 40 Anti-Glare Honey Comb Louvre

Technical Specifications

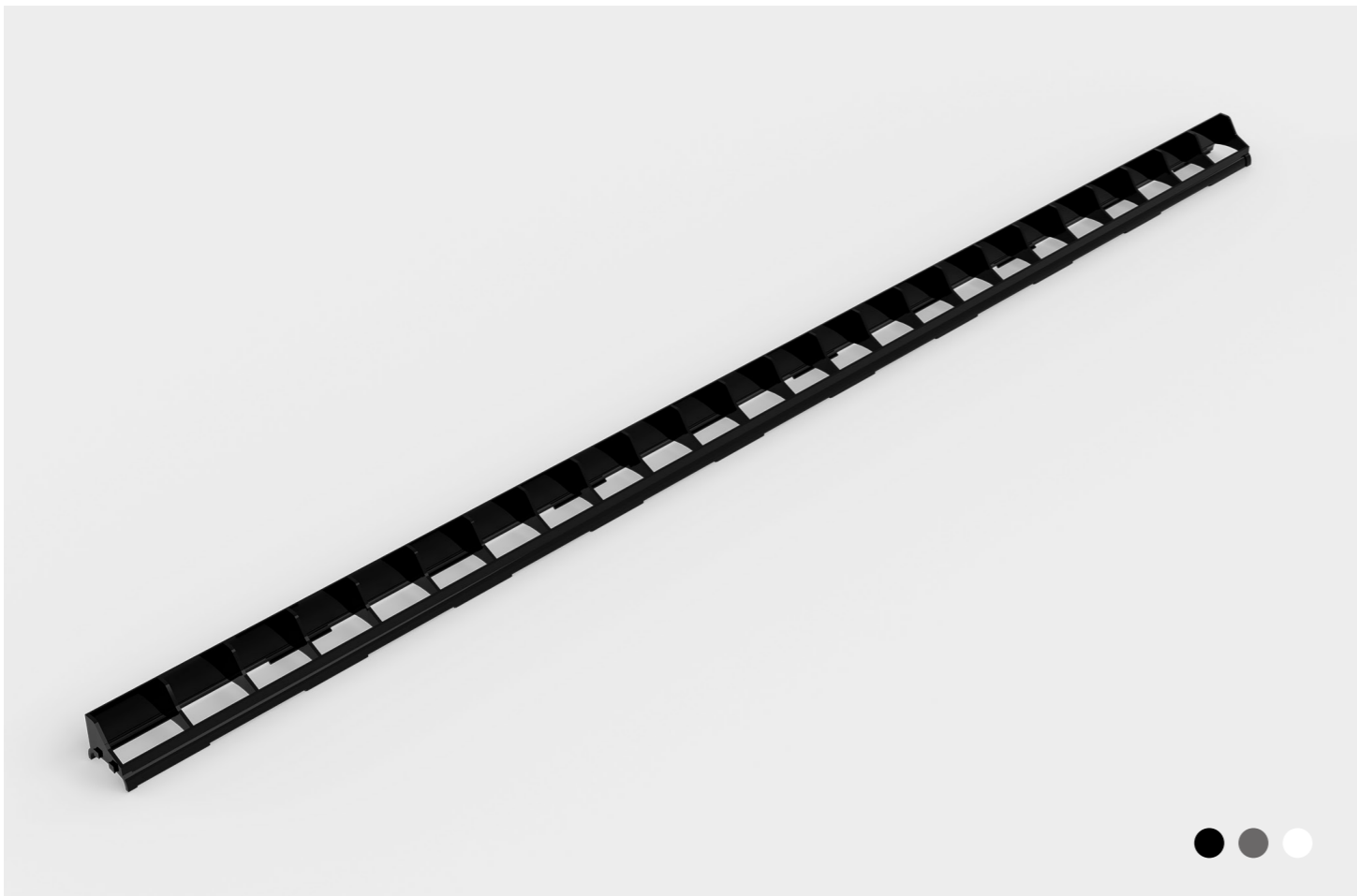
Material Aluminium
Material Colour Black
Dimensions 28mm x 1mm | 1.10in x 0.03in

Technical Drawing



Technical Specifications

Type	Material	Material Colour	Length	Product Code
Anti-Glare Honey Comb Louvre	Aluminum	Black	300mm 11.8in	RO40BHC3
Anti-Glare Honey Comb Louvre	Aluminum	Black	600mm 23.62in	RO40BHC6
Anti-Glare Honey Comb Louvre	Aluminum	Black	900mm 35.43in	RO40BHC9
Anti-Glare Honey Comb Louvre	Aluminum	Black	1200mm 47.24in	RO40BHC12



Technical Specifications

Type	Material	Material Colour	Length	Product Code
Anti-Glare Asymmetric Louvre	Plastic	Black	300mm 11.8in	ROBAGAL3
Anti-Glare Asymmetric Louvre	Plastic	White	300mm 11.8in	ROWAGAL3
Anti-Glare Asymmetric Louvre	Plastic	Grey	300mm 11.8in	ROGAGAL3
Anti-Glare Asymmetric Louvre	Plastic	Black	1200mm 47.24in	ROBAGAL12
Anti-Glare Asymmetric Louvre	Plastic	White	1200mm 47.24in	ROWAGAL12
Anti-Glare Asymmetric Louvre	Plastic	Grey	1200mm 47.24in	ROGAGAL12

Intra Anti-Glare Asymmetric Louvre

Technical Specifications

Material Plastic
Material Colour Black | Grey | White
Dimensions 39.02mm x 43.67mm | 1.53in x 1.17in

Technical Drawing

